



ELEVATION A - 2,516 SQ. FT.

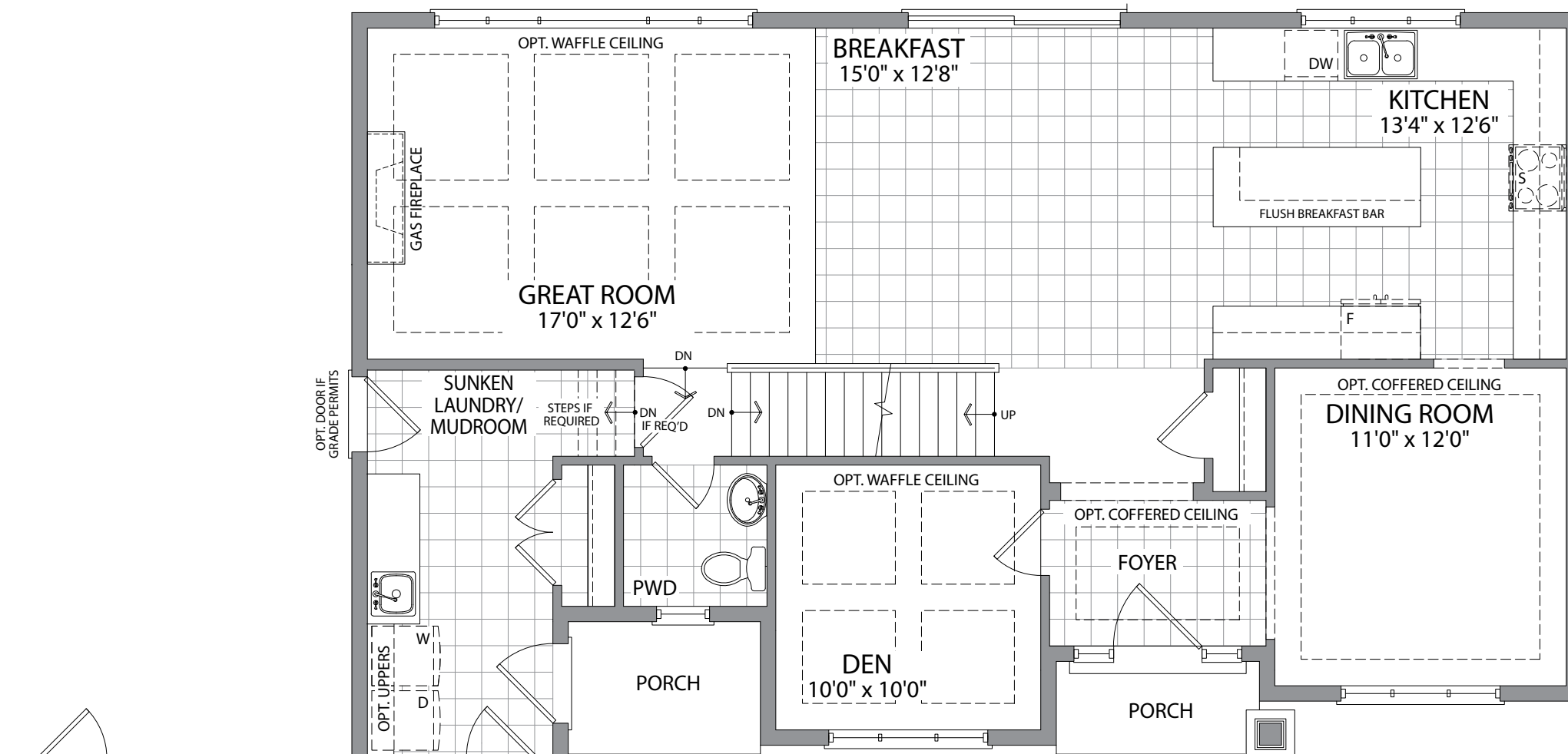


ELEVATION B - 2,591 SQ. FT.

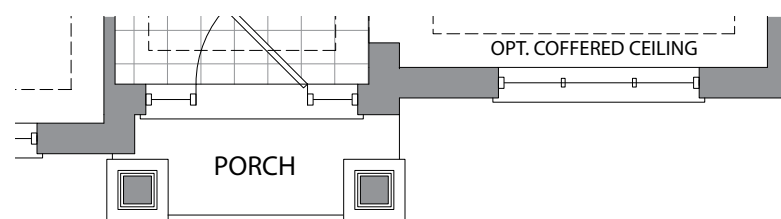
THE DRIFTWOOD

4 BEDROOM | 3 1/2 BATHS | 3-CAR GARAGE

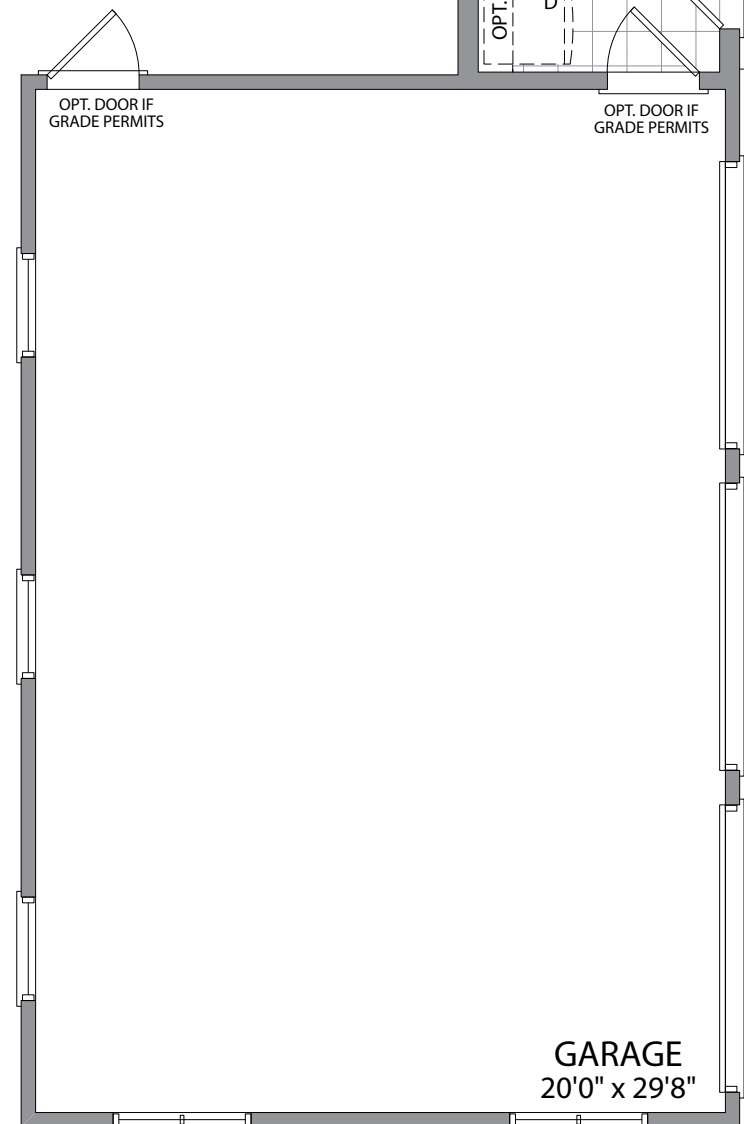
2,516/2,591 SQ. FT.



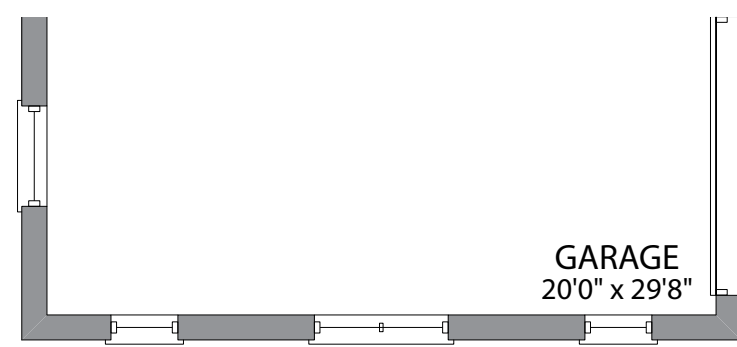
GROUND FLOOR ELEVATION A



PARTIAL GROUND FLOOR ELEVATION B

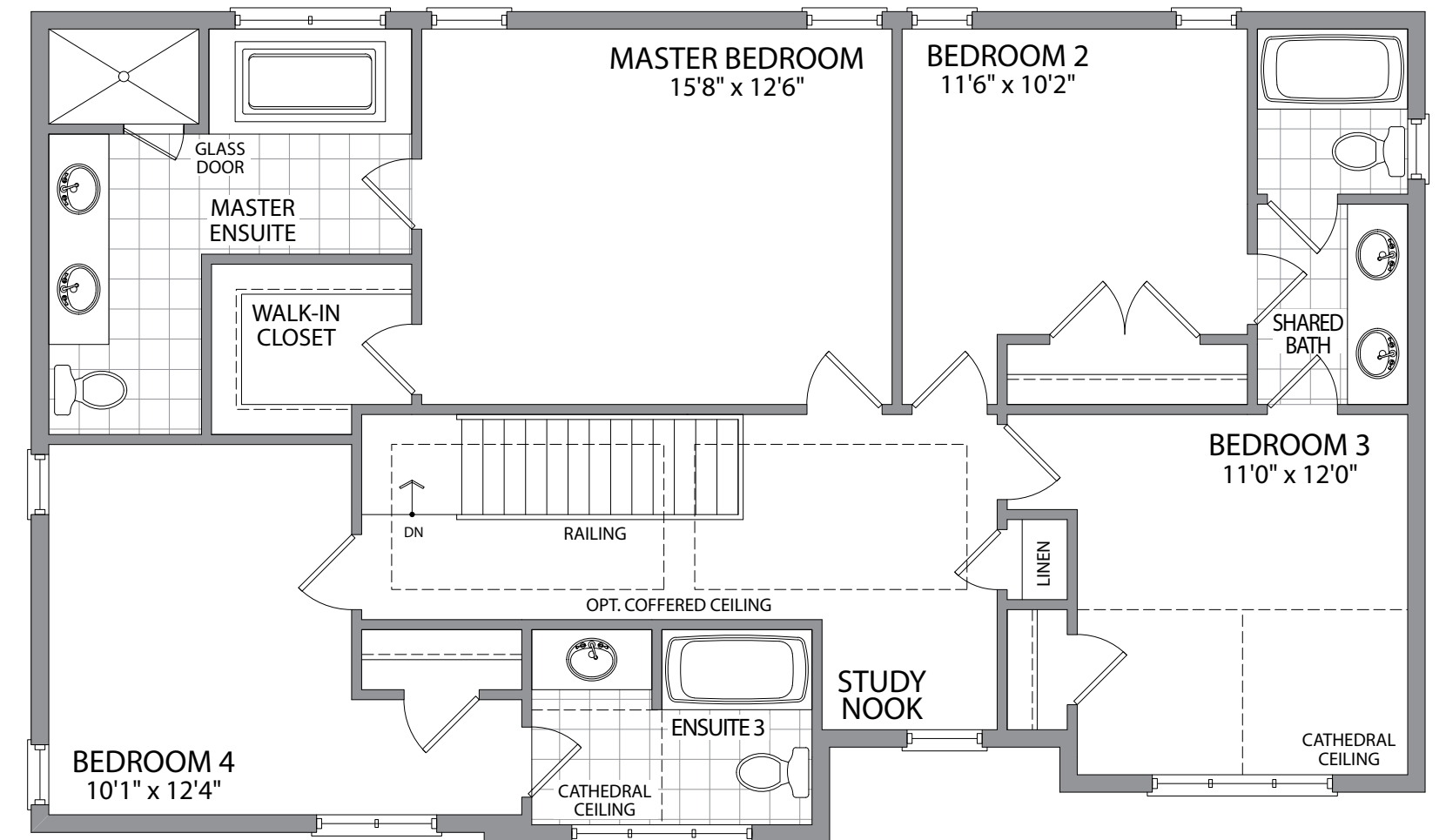


GARAGE 20'0" x 29'8"

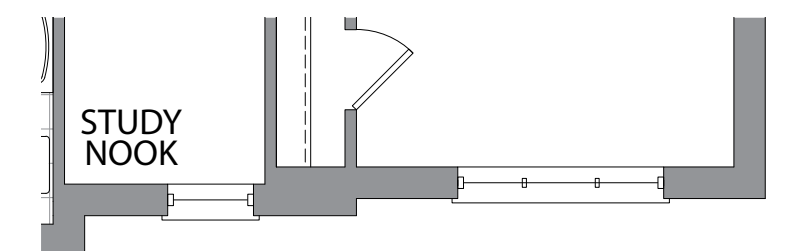


GARAGE 20'0" x 29'8"

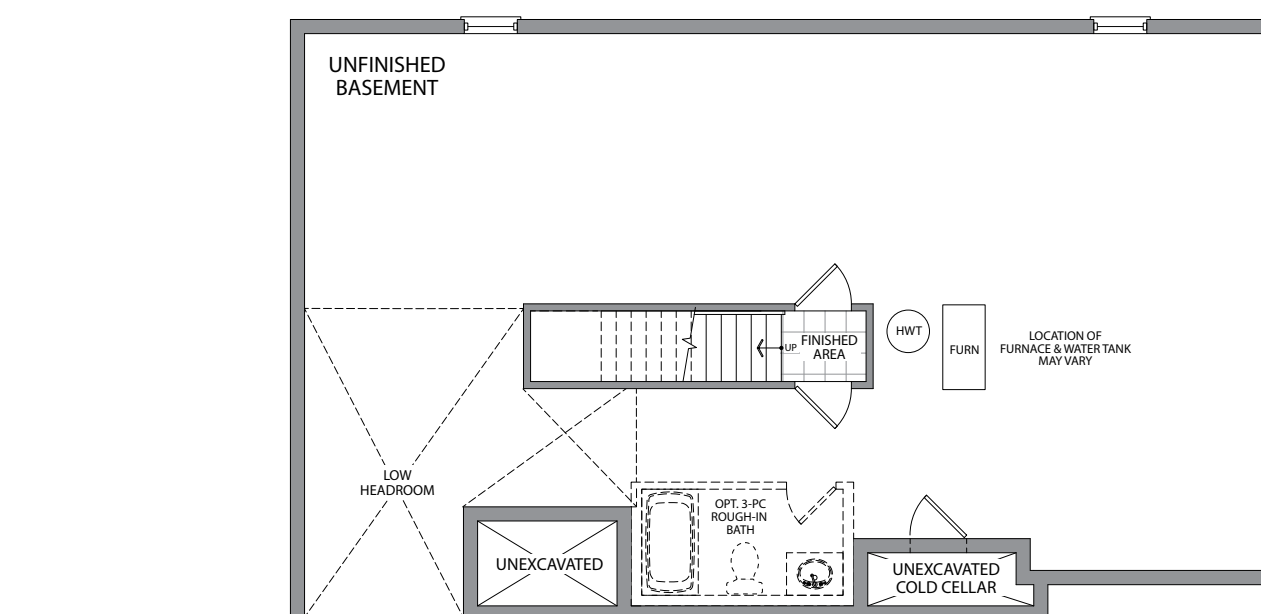
PARTIAL GROUND FLOOR ELEVATION B



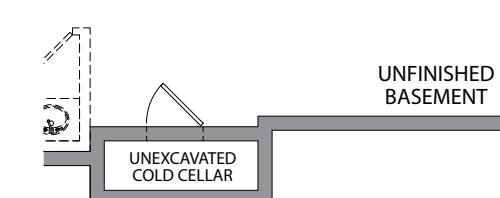
SECOND FLOOR ELEVATION A



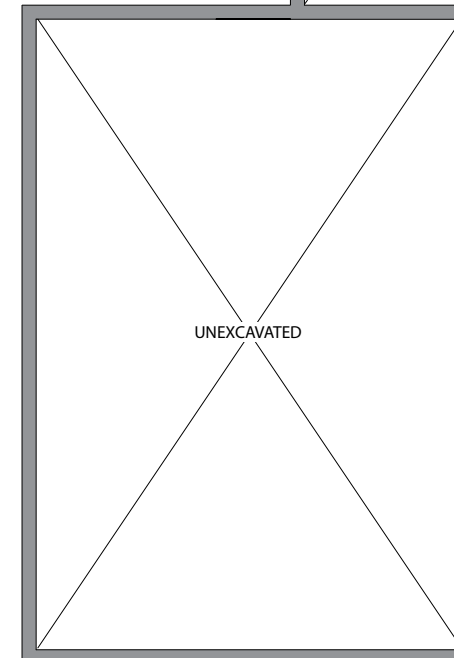
PARTIAL SECOND FLOOR ELEVATION B



BASEMENT FLOOR ELEVATION A



PARTIAL BASEMENT FLOOR ELEVATION B



UNEXCAVATED